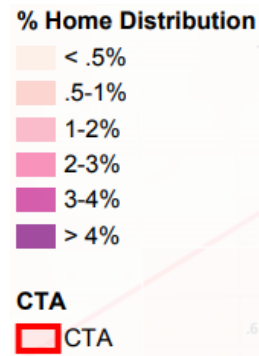
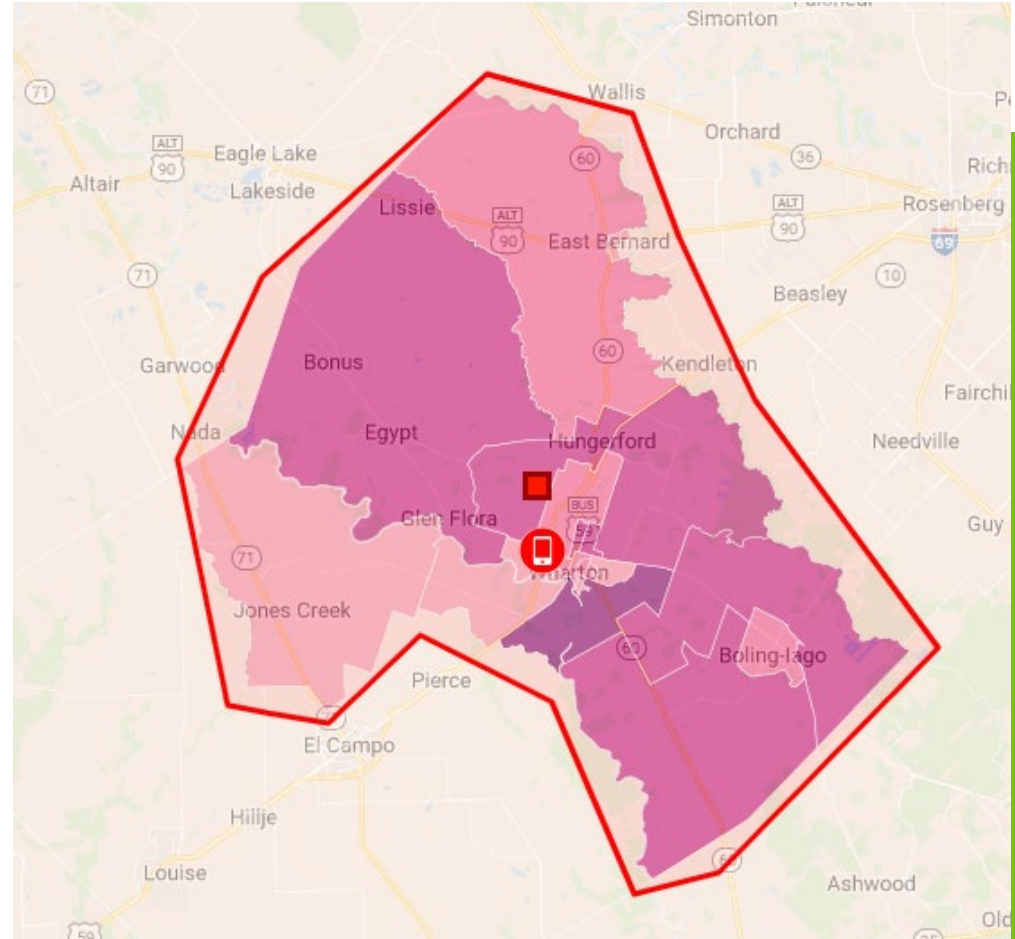


DISCOVER

Mobile Data Collection

This mobile tracking service uses data collected from mobile phone users who have agreed within their apps and phone settings to enable location information. By drawing a geofence around a specific business or location, we are able gather valuable data about the customer base that has actively used their mobile device while in the identified location. This tool allows us to see where customers are coming from to shop in your market using actual data. This information is used to optimize your trade area, analyze business locations, compare the frequency of visitors, and assist retailers in site selection. This is intended to support the trade area but does not solely define the trade area.



The location tracked was
 Wharton Walmart
 for the time period of
 March 2021
 To
 March 2022